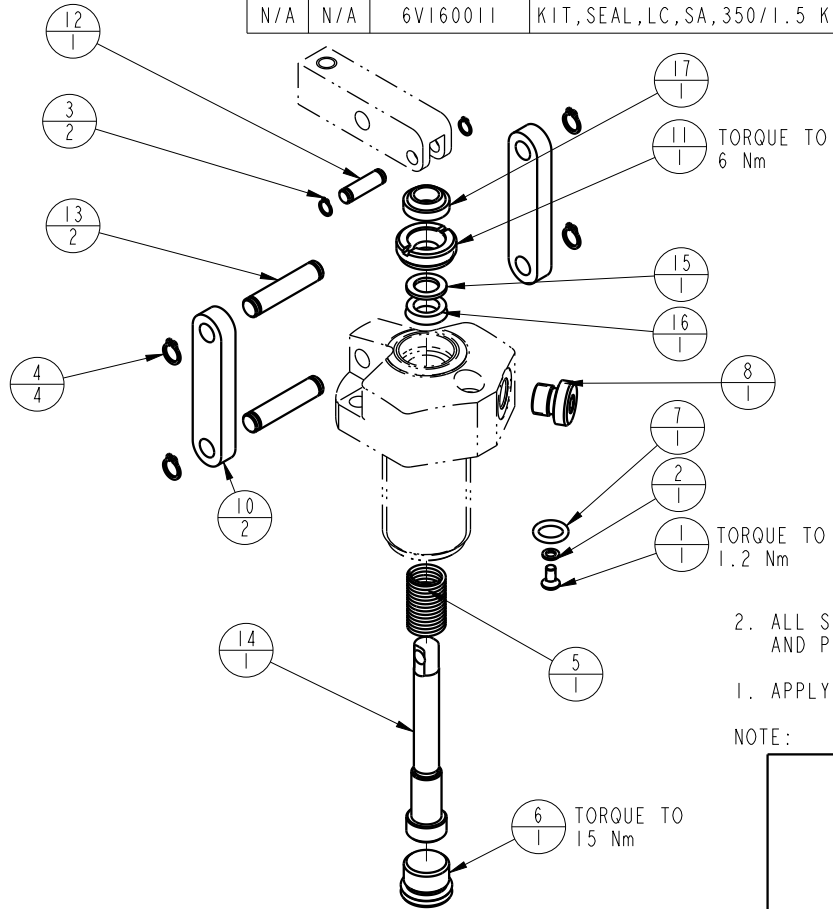



1		2			
MODEL NO.		MODEL NAME			
41661040		ASSY, LC, SA, 15 KN			
NO.	QTY	PART NO.	DESCRIPTION	STD SEAL KIT	FKM SEAL KIT
1	1	21500019	SCREW, CAP, BTNH, M3 X 6, ALY		
2	1	21500200	WASHER		
3	2	23050020	RING, RTNG, EXT, 0.188	X	X
4	4	23050021	RING, RTNG, EXT, 0.250	X	X
5	1	23350048	SPRING, COMPRESSION		
6	1	30670008	PLUG, SAE 6, FKM	X	X
7	1	39050042	O-RING, (-011)	X	39051025
8	1	43068004	PLUG, SOCH, GI/8		
9	1	67040065	TAG, LINK ASSY, LC		
10	2	81600021	LINK, LC, 450 lb		
11	1	81600036	RETAINER, LC, 450		
12	1	81600076	PIN, LC, SHORT, 450		
13	2	81600081	PIN, LC, LONG, 450		
14	1	81600112	PLUNGER, LC, SA, 350/1.5 KN		
15	1	39F54005	BU RING, (-109)	X	X
16	1	39H52039	SEAL, BEVEL, 5/16 x 3/32 x 1/2	X	39V52031
17	1	39V53025	WIPER, SNAP-IN, (5/16)	X	X
N/A	N/A	60160011	KIT, SEAL, LC, SA, 350/1.5 KN	NOTED	
N/A	N/A	6V160011	KIT, SEAL, LC, SA, 350/1.5 KN, FKM		NOTED



2. ALL SEALS, BU RINGS, RETAINING RINGS, O-RINGS, AND PLUGS ARE INCLUDED IN THE SEAL KIT.
 1. APPLY LUBRICANT TO ALL SEALS PRIOR TO ASSEMBLY.
 NOTE:

PARTS LIST	 VEKTEK, INC. 1334 E. SIXTH AVE. P.O. BOX 625 EMPORIA, KS. 66801 U.S.A.	
	ASSEMBLIES AFFECTED	PARTS LIST, LC, SA, 1.5 KN
41-6610-40	SIZE A	MPL1609 REV D

D	5718	RELEASE	NPETERS	6/9/25
REV	IN ACCORDANCE WITH ECN	EFFECTIVE DATE	REVISED BY	DATE
DRW BY:	K. ROEMER	DRAWING STATUS: Released		
DATE:	08/23/06	PRODUCTION APPROVED FOR RELEASED STATUS ONLY		